



Legend

- GIA
434.76 Sq M / 4,679.7 Sq Ft
- NIA
327.55 Sq M / 3,525.7 Sq Ft
- Standard Facilities
23.10 Sq M / 248.6 Sq Ft

IPMS 2 442.15 Sq M / 4,759.3 Sq Ft

Notes

This building survey was captured with a BLK2Go digital surveying device. Captured measurements reflect only those areas which our digital surveyors were either instructed or permitted to capture.

Date	Description	Rev.
31/08/2021	For Information	0

Capture Date	Production Date
27/08/2021	31/08/2021
Captured by	Produced by
Rykie Charles	Juandre De Villiers
Occupancy	Checked By
Vacant	Jack Jill
Stak ID	Laser Scan Points
61289df899595e0de047db00	44,843,095

Building
Bureau C3

Address
Design District, 13 Soames Walk

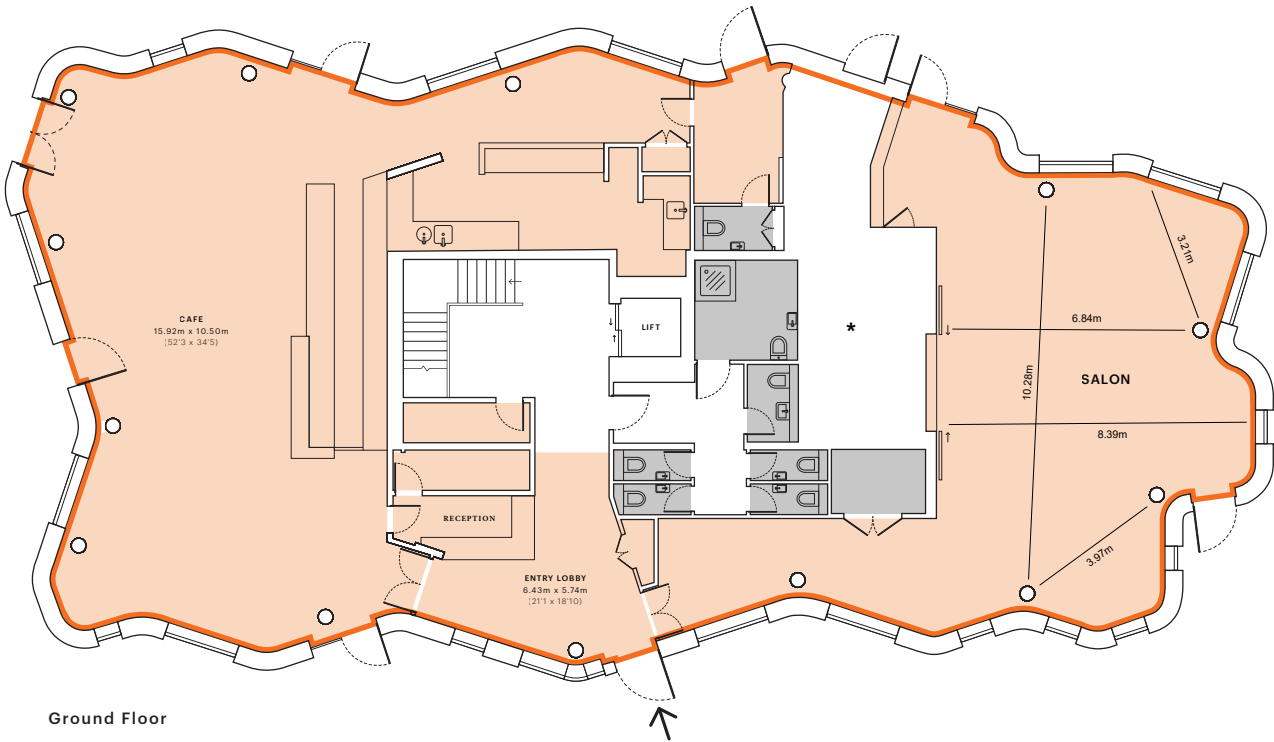
Postcode	City	Floor	Rev.
SE10 OAX	London	0	0

Title
Gross Internal Area - Ground Floor



support@stak.co
6th Floor, 1 Knightsbridge Green, London, SW1X 7QA

Stak Verified floor plans are produced in accordance with the Royal Institution of Chartered Surveyors RICS Property Measurement, 2nd edition, January 2018 and RICS Code of Measuring Practice, 6th edition, May 2015.



Ground Floor

Orientation



Scale



Additional Notes

*Refuse & Plant Room inaccessible at the time of capture. The Refuse & Plant Room are included in GIA, but excluded from NIA and Standard Facilities (where applicable).